

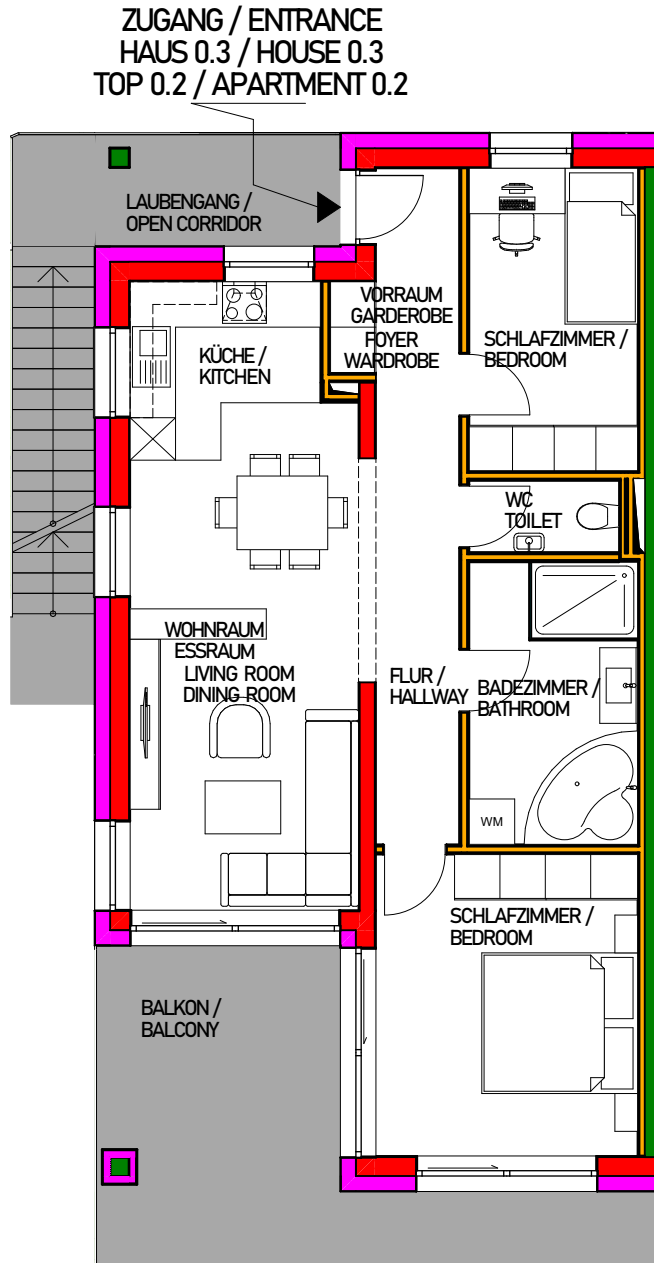
WIENERSTRASSE 9, A-7082 DONNERSKIRCHEN

ÜBERSICHTSPLAN

HAUS 0.3  
TOP 0.2 - 1.OBERGESCHOSS

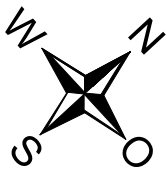
LAYOUT

HOUSE 0.3  
APARTMENT 0.2 - SECOND FLOOR



HOUSE 0.3 -  
APARTMENT 0.2  
ca. 68 m<sup>2</sup>  
BALCONY  
ca. 18 m<sup>2</sup>  
ENTRANCE  
ca. 6 m<sup>2</sup>  
PARKING LOT 1  
ca. 16 m<sup>2</sup>  
PARKING LOT 2  
ca. 18 m<sup>2</sup>

HAUS 3 - TOP 2  
ca. 68 m<sup>2</sup>  
BALKON  
ca. 18 m<sup>2</sup>  
ZUGANG  
ca. 6 m<sup>2</sup>  
PARKPLATZ 1  
ca. 16 m<sup>2</sup>  
PARKPLATZ 2  
ca. 18 m<sup>2</sup>



IMMOBILIEN GMBH